



JESMOND DENE HOUSE

Hotel & Restaurant



A Place to do Business



Welcome

Jesmond Dene House offers style, a sense of history and a beautiful green setting yet is only five minutes from Newcastle city centre. Bordered by gardens, the house overlooks the small wooded valley of Jesmond Dene. Inside, the emphasis is on individuality, understated luxury and genuine, unfussy comfort.

The rich features of the Arts and Crafts house make a handsome backdrop to bold and light-filled rooms. There are huge windows, massive fireplaces, polished floors and an overall feeling of colour and warmth. Whether you're here to enjoy a meal, a stay in the bedrooms, to do business or to celebrate, we aim to create an atmosphere where you can relax and feel a little bit special.

What we offer

Our three meeting rooms are designed to let you focus on work in comfortable, quiet and relaxed surroundings yet still offer you the technological support that a modern business needs.

Two rooms are tucked away from the rest of the hotel guests on the lower ground floor - although still with natural daylight - with one room holding up to 30 people and the smaller room having a capacity of 16 people, depending on layout. These are ideal for board meetings, power breakfasts, brain-storming sessions or small seminars.

For larger gatherings, lectures, presentations and exhibitions, the wood-panelled Great Hall, in the west wing of the hotel, has seating for up to 100 people or reception space for 150 guests. The adjacent Reception Rooms can be used as a break-out area.

Wired for business - broadband connectivity, audio-visual facilities, conference telephones, video conferencing capability - the technical capability and layout of each room can be adapted to individual needs.

In a peaceful, residential suburb, yet close to the city centre (five minutes) and airport (15 minutes), the hotel has on-site parking and offers privacy and security.





Venues

John Dobson

On the lower level of the hotel, this room has natural daylight and a private terrace overlooking the trees of the Dene. It can take between 16 and 30 people for a meeting, depending on layout. Drinks or tea and coffee breaks can be taken on the terrace.

Frank Rich

Next door to the John Dobson Room, this room overlooks the Dene and can take between 8 and 16 people for a meeting, depending on layout.







Great Hall

A double height room with oak panelling, minstrels' gallery, inglenook fireplace and lofty windows, the Great Hall offers a dramatic space for events with between 30 and 100 people, depending on layout, or for receptions of up to 150 guests. With a separate, stone arched entrance - away from hotel and restaurant guests - the room can be adapted for presentations, exhibitions, seminars and meetings. Refreshment breaks or pre-lunch and dinner drinks can be taken in the adjacent Reception Rooms.

Garden

A contemporary style garden borders the house. With its paved, lower terrace, charming pergola, striking colours and informal lawn, it makes a lovely setting for drinks receptions or photographs.

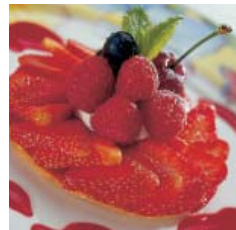


Dining

Food is at the heart of Jesmond Dene House. We put great emphasis on creating fine, flavoursome dishes where there's both respect and passion for the ingredients. Menus are inspired by the seasons with produce from trusted and responsible sources, preferably local and, where possible, organic. Add a leafy setting, handsome architecture, rich colours and an attentive service, and our Restaurant and private dining rooms make for a memorable occasion whether you are here for pleasure, for work or for business entertaining.

Our aim is to be as flexible as possible so that you can focus on your day's activities. You can choose to dine in our Restaurant, combine work with eating in your meeting room or take one of our private dining rooms. These rooms can seat from 10 to 100 people with larger parties being accommodated in the Great Hall.

From finger buffets to power breakfasts, working lunches to formal dinners, you can choose to be as extravagant or as simple as you like. We have a choice of menus to suit different budgets or we'd be happy to create something that includes a favourite dish. We can also advise on reception drinks and wines.





Bedrooms

The hotel has 40 individually designed bedrooms ranging from singles and small doubles to deluxe rooms and suites. No two rooms are the same - there might be a fireplace, timbered ceiling, grand window or private terrace - with views varying from trees to garden to rooftops. Furnishings are sleek, modern and uncluttered with luxurious touches of velvet, silk and suede. Bathrooms have a crisp, clean functionalism: big mirrors, big shelves, plenty of light.

Eight rooms, mainly junior suites, are in the New House, close to the Great Hall and a modern interpretation of the Arts and Crafts style.

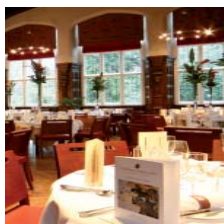
Rooms are designed for both relaxation and work, with flat screen LCD television, cd/dvd player, digital radio, broadband access, desk space as well as fresh fruit, bathrobes, complimentary weekday newspaper and underfloor heating in the bathroom.







Details



The Great Hall

9.1m x 13.8m

Reception	150
Theatre	100
Cabaret	50
Boardroom	40
U-shape	35
Classroom	60



John Dobson Room

7.1m x 6m

Theatre	30
Boardroom	20
U-shape	16



Frank Rich Room

6.2m x 5.3m

Theatre	16
Boardroom	10
U-shape	8

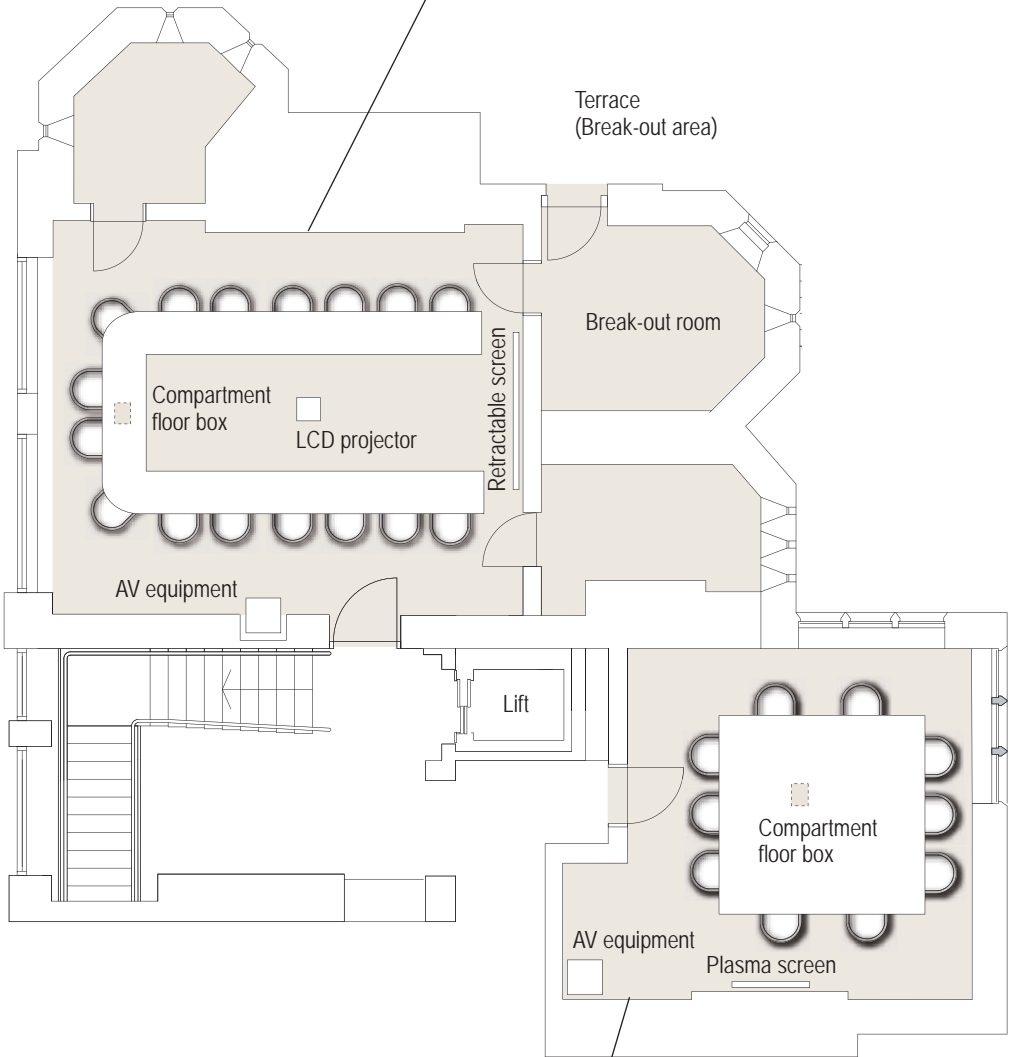
Facilities	GH	JD	FR
TV/Satellite TV/Video/DVD/CD	Yes*	Yes	Yes
Overhead projector/LCD projector/Screen	Yes*	Yes	Yes
Laptop computer connection	Yes	Yes	Yes
Broadband	Yes	Yes	Yes
PA system	Yes*	No	No
Flipchart	Yes	Yes	Yes
Video conferencing	No	Yes	Yes
Dimmable light switches	Yes	Yes	Yes
Portable induction loops	Yes	Yes	Yes

* Equipment is not permanent and is hired according to requirements

Layouts

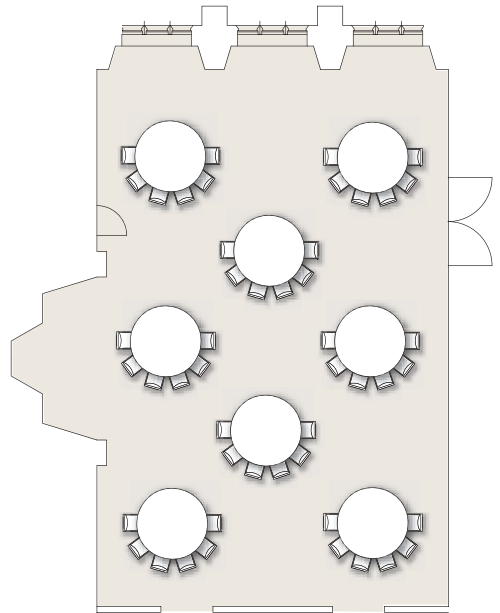
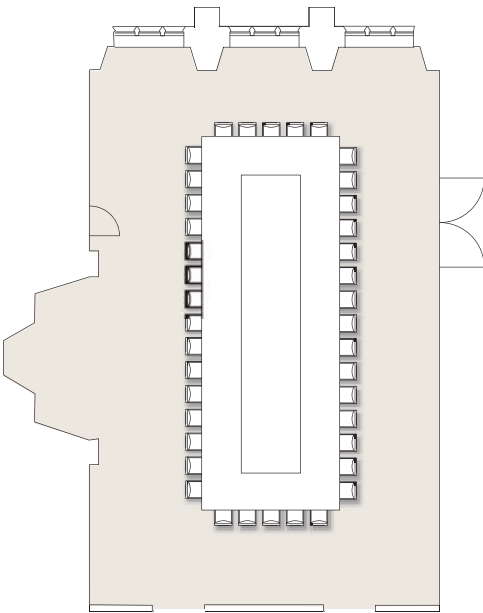
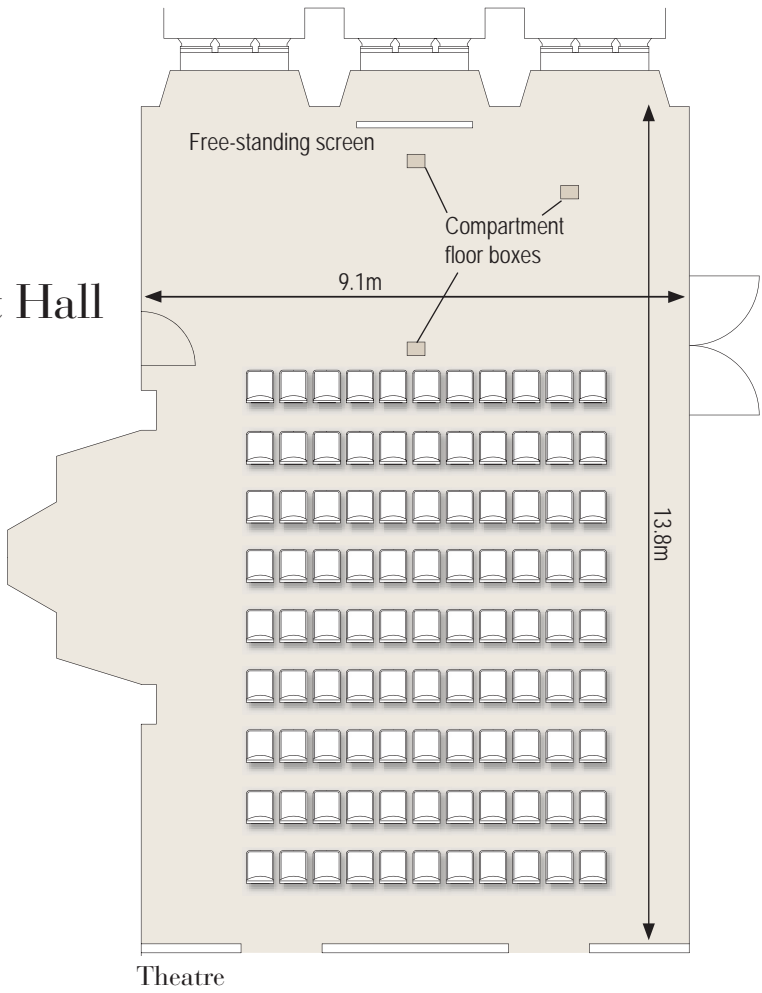
The following are examples of room layouts. Other configurations are also possible.

John Dobson



Frank Rich

Great Hall





For further information or to discuss your requirements,
please telephone 0191 212 3000 or email info@jesmonddehouse.co.uk.

Room and Restaurant bookings can be made on-line
by visiting www.jesmonddehouse.co.uk.





Jesmond Dene House Ltd.
Jesmond Dene Road, Newcastle-upon-Tyne, NE2 2EY
United Kingdom.

Tel: +44 (0)191 212 3000 Fax: +44 (0)191 212 3001

Email: info@jesmonddenehouse.co.uk

www.jesmonddenehouse.co.uk

